

# THE WESTIN

## TEMPE









# HOTEL HIGHLIGHTS & LOCATION

---

## Skysill Rooftop Lounge

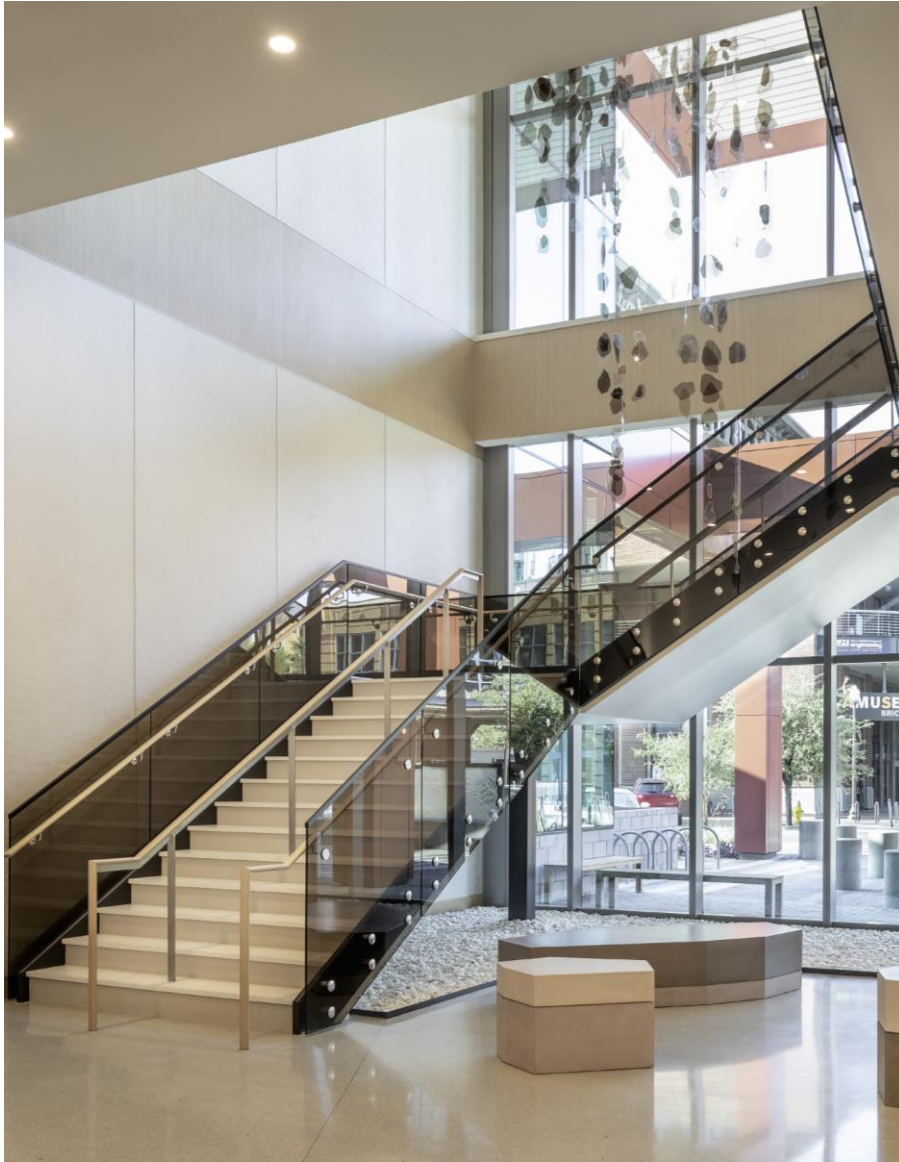




# DOWNTOWN TEMPE

Located just 4.1 miles from PHX Sky Harbor Airport, Tempe is the most walkable city in the Greater Phoenix Area where your guests are less than 3 blocks to more than 70 dining options and more than 100 shops and entertainment venues. Guests are also 10-15 minutes from Downtown Scottsdale or Downtown Phoenix





# HOTEL HIGHLIGHTS

---

- 290 Guestroom & Suites
- 18 Suites including 2 Penthouse Suites
- 21,000sf of event space with 5,000sf ballroom
- Rooftop Pool & Lounge
- Three (3) Food & Beverage Outlets
- Private outdoor Terrace for Group Dining
- WestinWORKOUT® Gym
- All Valet parking
- Hotel adjacent to Tempe Streetcar





# The Achiever

---

# SLEEP WELL AT WESTIN

---

As an Achiever, be at your best while on the road while taking advantage of Westin Heavenly guestroom amenities

- 396sf of space in each guestroom
- Westin Heavenly Bedding
- Westin Heavenly Spa Amenities
- Complimentary basic WiFi for all Bonvoy members
- Available views of Tempe, Scottsdale, and Phoenix





# EAT WELL AT WESTIN

---

## SKYSILL ROOFTOP LOUNGE

- Arizona's highest hotel rooftop bar & lounge with views of Tempe, Scottsdale, and Phoenix

## TERRA TEMPE KITCHEN & SPIRITS

- Dine at The Westin Tempe's signature restaurant which combines the bold, rustic flavors of Arizona and the Southwest with inspired, elevated cuisine

## CUP OF JOE MARKET CAFÉ

- Proudly serving Starbucks, Cup of Joe Market Café offers seamless grab-and-go food & beverage options with an assortment of retail apparel for those Achievers on the road





A tall, modern hotel building with a glass facade and red horizontal accents. The word "WESTIN" is visible at the top. The glass reflects the surrounding city and mountains. A semi-transparent white box with a grid pattern is overlaid on the right side of the image.

WESTIN

THANK YOU